

## STANDARD PACKING



Track/Plastic tooth



Door guider(optional)



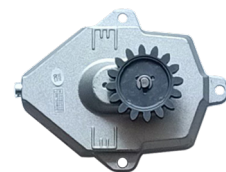
Full open device



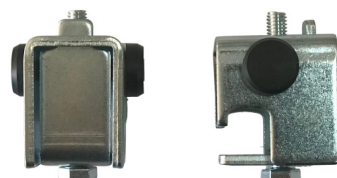
Spring drive device



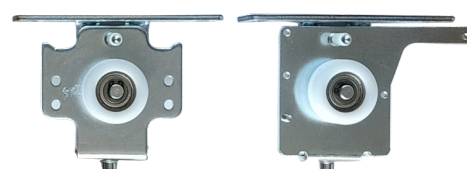
End wheel



Rear brake



Stopper



Hanger

**artek**   
AUTOMATIC DOORS

ARTEK INTELLIGENT TECHNOLOGY (ZHEJIANG) CO., LTD  
Address: No. 343 Lingan Road, Tongxiang Industrial Park,  
Zhejiang, China

Tel: +86 573 67923922 - Fax: +86 573 67971856

Email: [Info@artek.com.cn](mailto:Info@artek.com.cn)

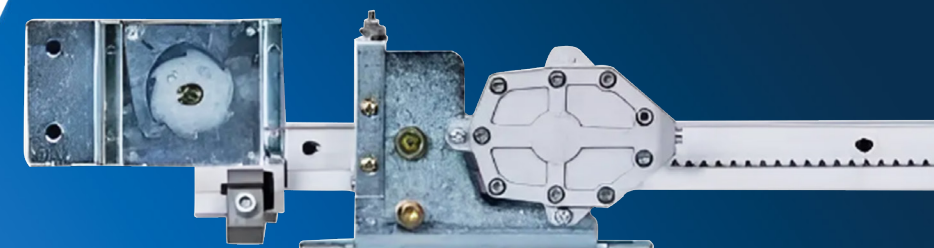
Website: [www.artekdoor.com](http://www.artekdoor.com)



QR WEBSITE

**artek**   
AUTOMATIC DOORS

Artek is a Chinese brand specializing in automatic door solutions, including sliding doors, semi-automatic doors, and other types of automated systems.



## SEMI-AUTO SLIDING DOOR

With a compact design and smart open-close mechanism, the semi-automatic sliding door optimizes movement and indoor environment control. Users simply slide the door open manually, and it will close automatically and quietly without noise. This product meets modern build standards while helping reduce operational costs.

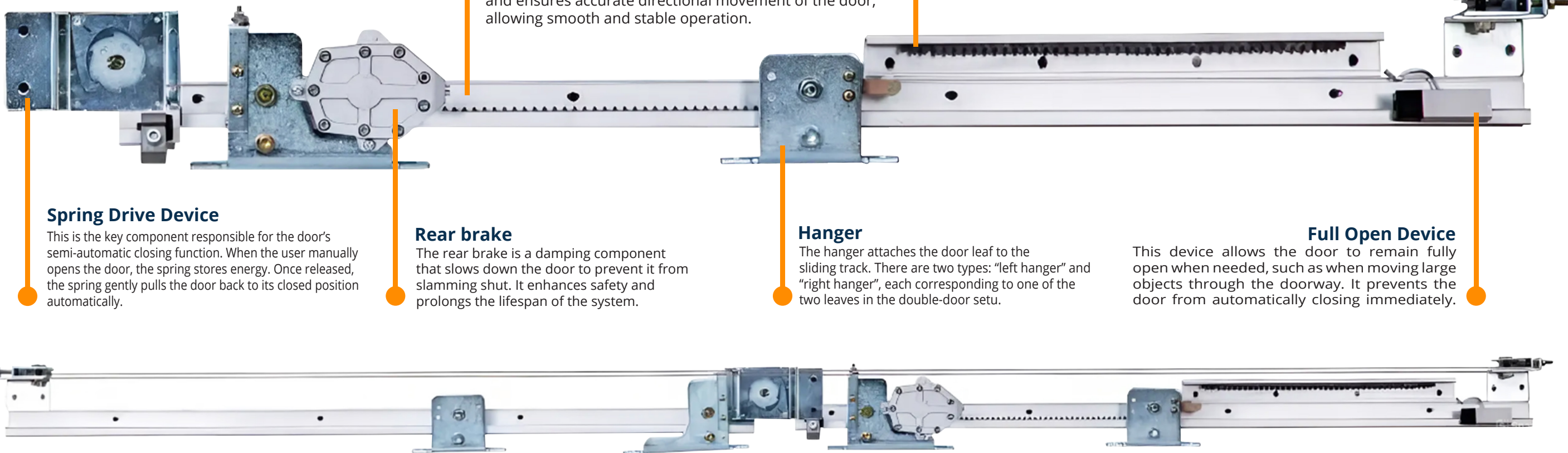


[www.artekdoor.com](http://www.artekdoor.com)

## SEMI-AUTO SLIDING DOOR DSMS-22/DSMS-31/DSMS-44A/DSMS-44B

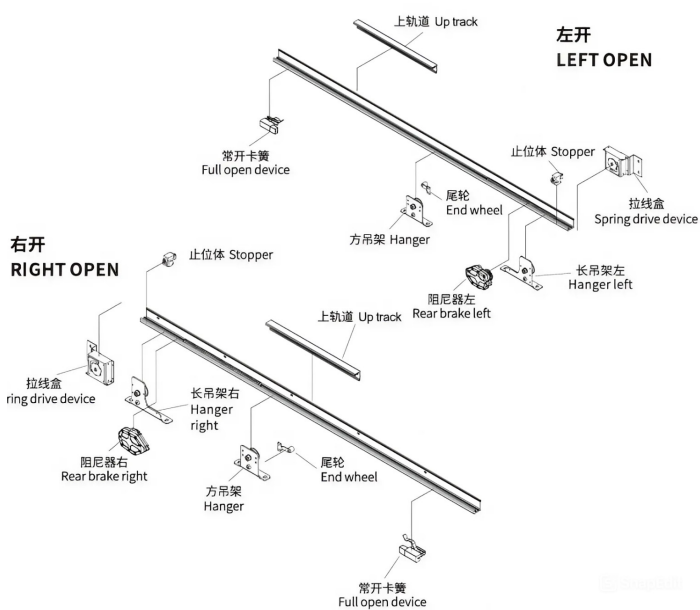
The **semi-automatic sliding door** is designed with a manual sliding system that allows the door to open by hand and automatically close using an air brake mechanism. Normally, the door remains fully closed, and when users need to enter or exit, they simply slide the door gently to one side. After that, the door will automatically close smoothly on its own.

### Single Opening

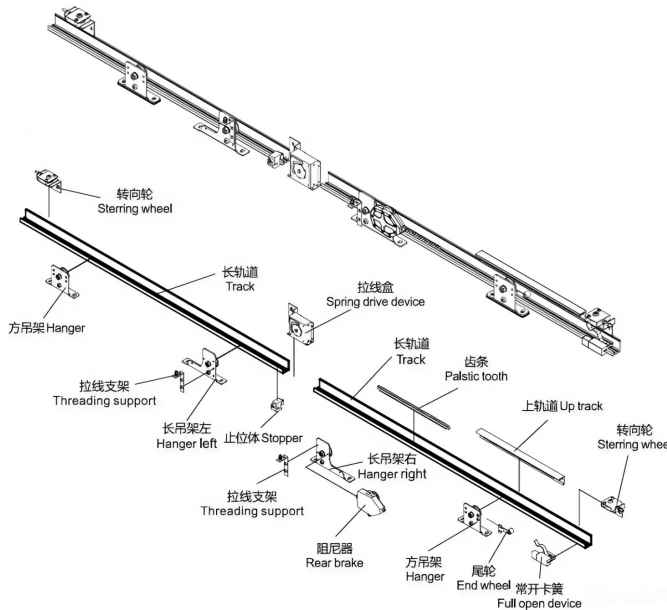


### Double Opening

#### LEFT OPEN/RIGHT OPEN



#### DOUBLE OPEN



#### TECHNICAL DATA

Model	DSMS-22	DSMS-31	DSMS-44A	DSMS-44B
Door weight	10–80 kgs/leaf	30–100 kgs/leaf	10–60 kgs/leaf	20–80 kgs/leaf
Door width	700–1200 mm	1200–1600 mm	700–1200 mm	700–1200 mm
Closing drive system	Spiral spring type			
Controlling system	Fluid friction resistance type			
Durability	More than 1 million open/close operations			
Spring thickness	0.265 mm	0.385 mm	0.265 mm	0.385 mm
Rail length	2200 mm	3100 mm	4400 mm	4400 mm
Always open function	Yes	Yes	Yes	Yes